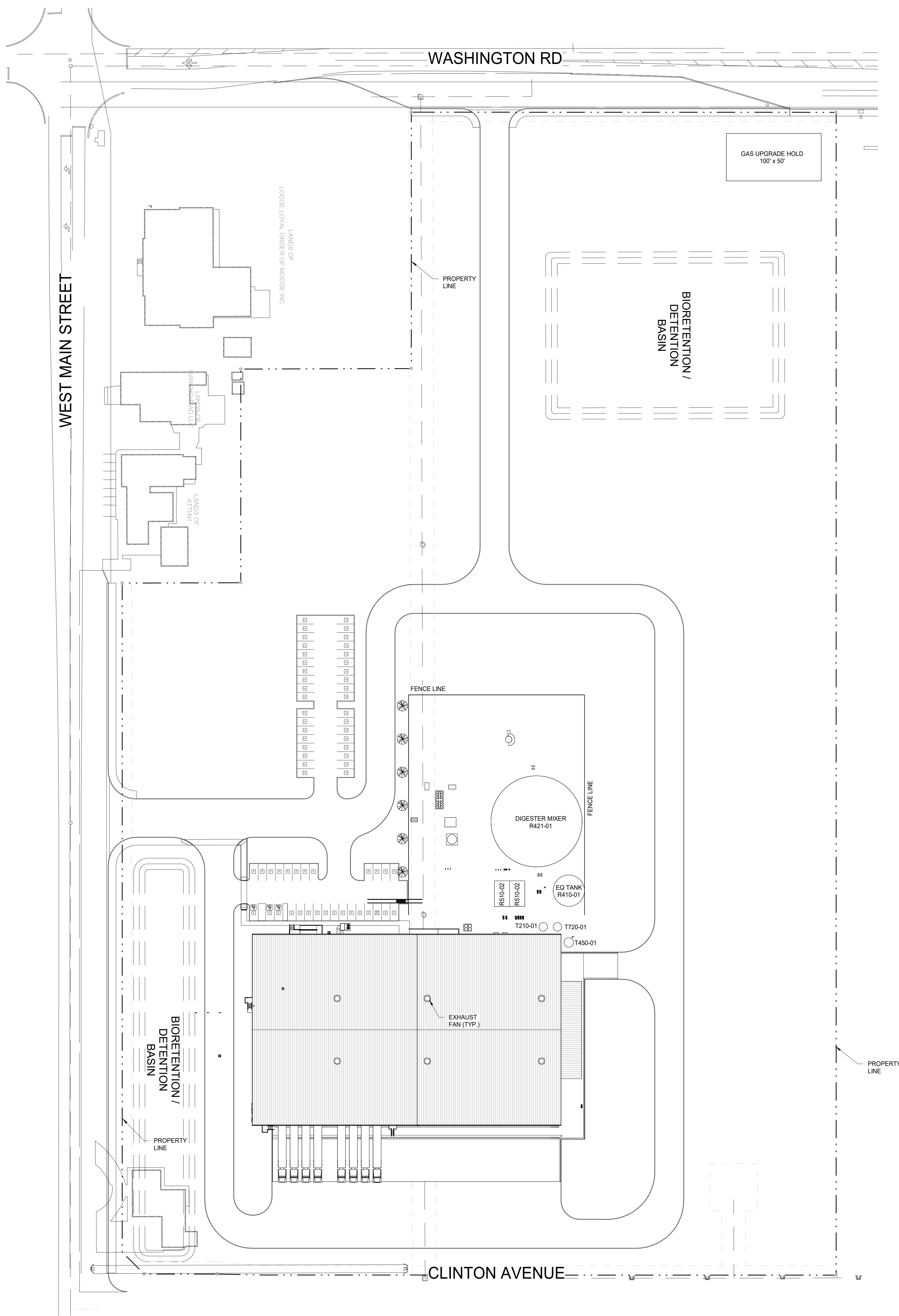




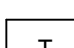
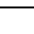






autodes

7



SITE LEGEND

	ACCESSIBLE PATH OF TRAVEL 1:20 MAX. SLOPE, 2% MAX. CROSS SLOPE.
	PROPERTY LINE.
	POLE MOUNTED LIGHT FIXTURE.
	WALLPACK LIGHT FIXTURE.
	TRANSFORMER WITH CONCRETE PAD. (PROVIDE PROTECTION BOLLARDS PER LOCAL UTILITY OR PUBLIC WORK STANDARDS)
	LANDSCAPE AND IRRIGATION AREA.
	FIRE LANE (HATCHED)
	PARKING STALL COUNT TOTAL
	FIRE HYDRANT
	P.I.V. WITH TAMPER

A/Z DESIGN SERVICES, LLC
a **Cianbro** company

A/Z Design Services, LLC
242 Trumbull Street
Second Floor
Hartford, CT 06103
800.400.2420 | a-zcorp.com

This document is an instrument of professional service, and shall not be used, in whole or in part, for any project other than for which it was created without the express, written consent of A/Z Design Services, LLC, or A/Z Corporation. Any unauthorized use, reuse, modification or alteration, including automated conversion of this document shall be at the user's sole risk without liability or legal exposure to A/Z Design Services, LLC, or A/Z Corporation.

CONSULTANTS

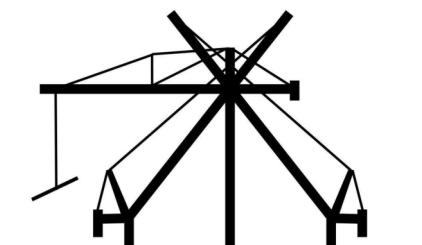


THE LEADER IN THE STEEL BUILDING INDUSTRY
WWW.SPANCONSTRUCTION.COM
 3353 YEAGER DRIVE
 MADERA, CA 93637
 559.661.1111

WARE MALCOMB

ARCHITECTURE
PLANNING
INTERIORS

4883 CHABOT DRIVE, SUITE 300
PLEASANTON, CA 94588
925.244.9620 | WAREMALCOMB.COM



**ELEVATED
DESIGN INC**
CONSULTING ENGINEERS
USING LESS ENERGY. BY DESIGN.
1212 Hancock Street, Suite 300
QUINCY, MA 02169
P: 724-561-6329



JENSEN HUGHES

FIRE PROTECTION
117 METRO CENTER BLVD, SUITE 1002
WARWICK, RI 02886
401.214.3168 | JENSENHUGHES.COM



Vizion Utility
PARTNERS

UTILITY DESIGN AND CONSULTING
901 STONERIDGE DRIVE, SUITE 200
PLEASANTON, CA 94588
925.882.1114 | VIZIONUTILITY.COM

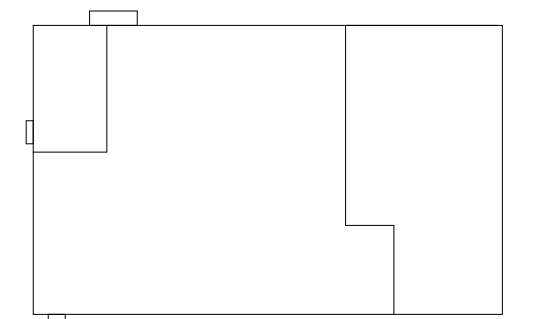
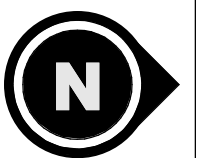
PROJECT

divert

INTEGRATED
FOOD RECOVERY
FACILITY

4407 WEST MAIN STREET
TURLOCK, CA 95380

KEY PLAN



REV	DESCRIPTION	DATE
A	PROGRESS REVIEW	03/08/2022
B	30% DESIGN COMPLETE	04/08/2022
C	30% DESIGN REDUCE SCOPE	05/13/2022
D	WORK IN PROGRESS	07/13/2022
E	WORK IN PROGRESS	07/20/2022
F	WORK IN PROGRESS	07/27/2022
G	ISSUED FOR 60% DESIGN	08/05/2022

SEAL

ARCHITECTURAL

OVERALL SITE PLAN

DRAWN BY: WM

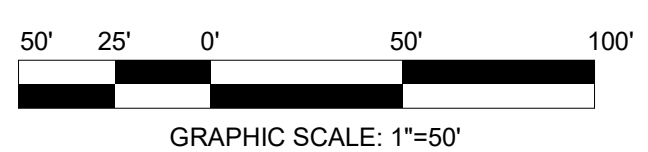
CHECKED BY: AZ

SCALE: As indicated

A-100

CONFIDENTIAL & PROPRIETARY

This document contains confidential and proprietary information which is the property of the Owner and must be safeguarded accordingly. Do not disclose information contained herein to any outside party. Dispose of this document either by shredding or controlled waste receptacles only. **This document may not be disposed of via normal trash.** When in use, this document must be under your control and care at all time. When not in use, this document must be properly filed and secured.



A

B

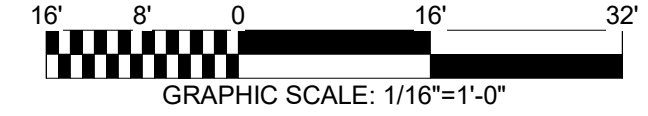
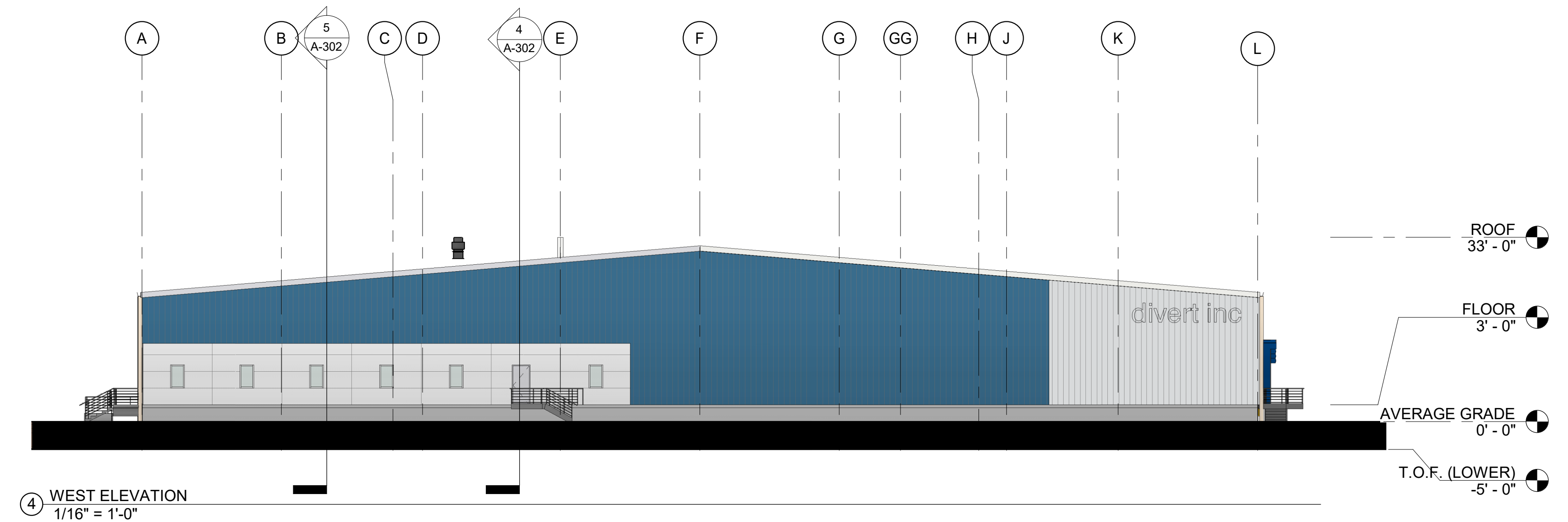
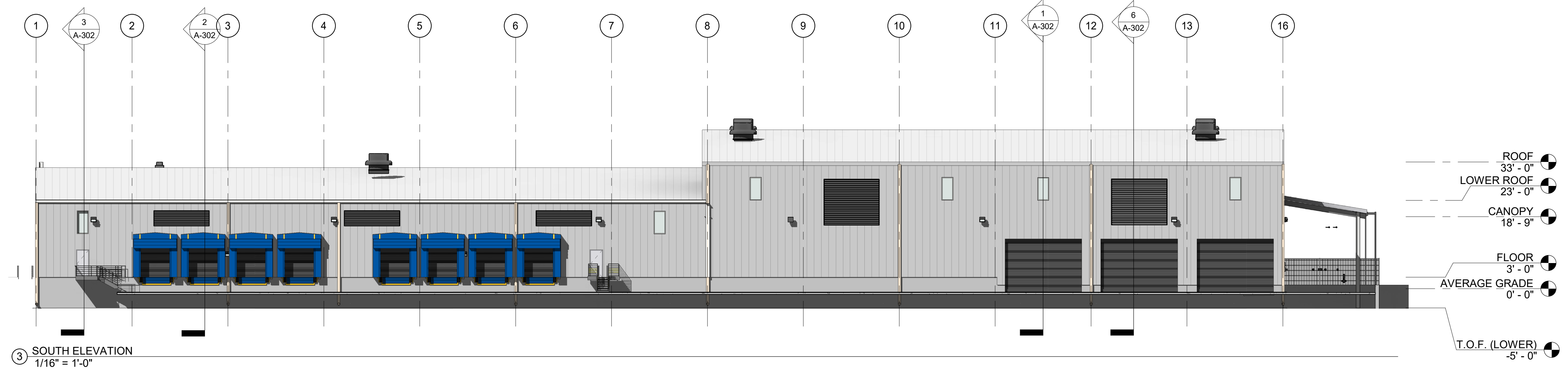
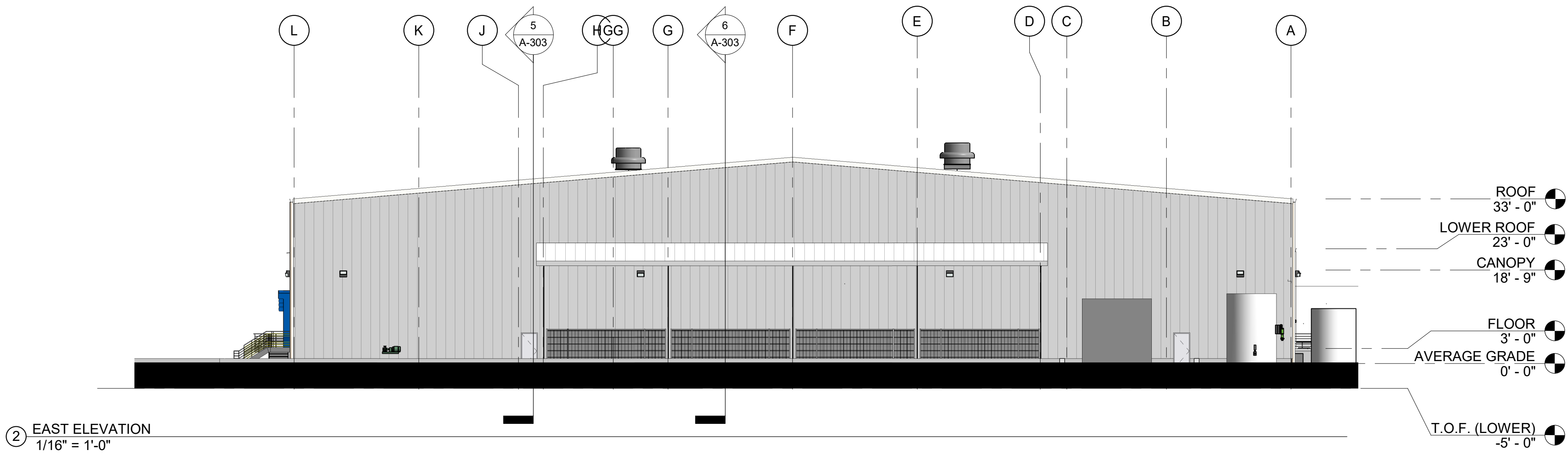
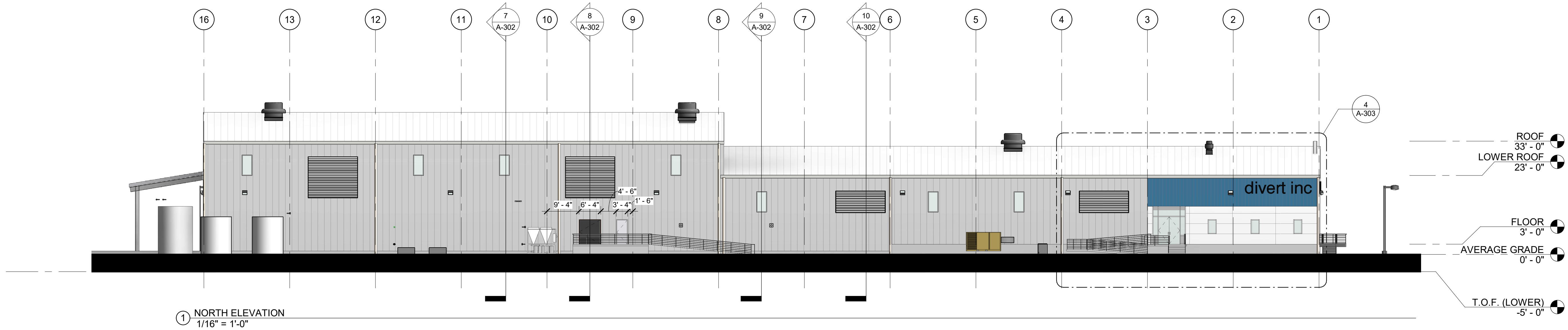
C

D

E

Autodesk Docs\\Divert\\Turlock\\Divert CA.rvt

8/9/2022 2:32:20 PM



AZ
DESIGN
SERVICES, LLC
A GIANIBRO company
A/Z Design Services, LLC
242 Trumbull Street
Second Floor
Hartford, CT 06103
800.400.2420 | a-zcorp.com

This document is an instrument of professional service, and shall not be used, in whole or in part, for any project other than for which it was created without the express, written consent of A/Z Design Services, LLC, or A/Z Corporation. Any unauthorized use, reuse, modification or alteration, including automated conversion of this document shall be at the user's sole risk without liability or legal exposure to A/Z Design Services, LLC, or A/Z Corporation.

SPAN
CONSTRUCTION
& ENGINEERING, INC.
THE LEADER IN THE STEEL BUILDING INDUSTRY
WWW.SPANCONSTRUCTION.COM
3333 YEAGER DRIVE
MADERA, CA 93637
559.661.1111

WARE MALCOMB
ARCHITECTURE
PLANNING
INTERIORS
CIVIL ENGINEERING
BRANDING
BUILDING MEASUREMENT
4683 CHABOT DRIVE, SUITE 300
PLEASANTON, CA 94588
925.244.9620 | WAREMALCOMB.COM

ELEVATED
DESIGN INC
CONSULTING ENGINEERS
USING LESS ENERGY. BY DESIGN.
1212 Hancock Street, Suite 300
QUINCY, MA 02169
P: 724-561-6329

JENSEN HUGHES
FIRE PROTECTION
117 METRO CENTER BLVD, SUITE 1002
WARWICK, RI 02886
401.214.3160 | JENSENHUGHES.COM

Vizion Utility
PARTNERS
UTILITY DESIGN AND CONSULTING
7901 STONERIDGE DRIVE, SUITE 200
PLEASANTON, CA 94588
925.682.1114 | VIZIONUTILITY.COM

divert
INTEGRATED
FOOD RECOVERY
FACILITY
4407 WEST MAIN STREET
TURLOCK, CA 95380

CONFIDENTIAL & PROPRIETARY
This document contains confidential and proprietary information which is the property of the Owner and must be safeguarded accordingly. Do not disclose information contained herein to any outside party. Dispose of this document either by shredding or controlled waste recycling only. This document may not be disposed of via normal trash. When in use, this document must be under your control and care at all time. When not in use, this document must be properly filed and secured.

REV	DESCRIPTION	DATE
A	PROGRESS REVIEW	03/08/2022
B	30% DESIGN COMPLETE	04/08/2022
C	30% DESIGN REDUCE SCOPE	05/13/2022
D	WORK IN PROGRESS	07/13/2022
E	WORK IN PROGRESS	07/20/2022
F	WORK IN PROGRESS	07/27/2022
G	ISSUED FOR 60% DESIGN	08/05/2022

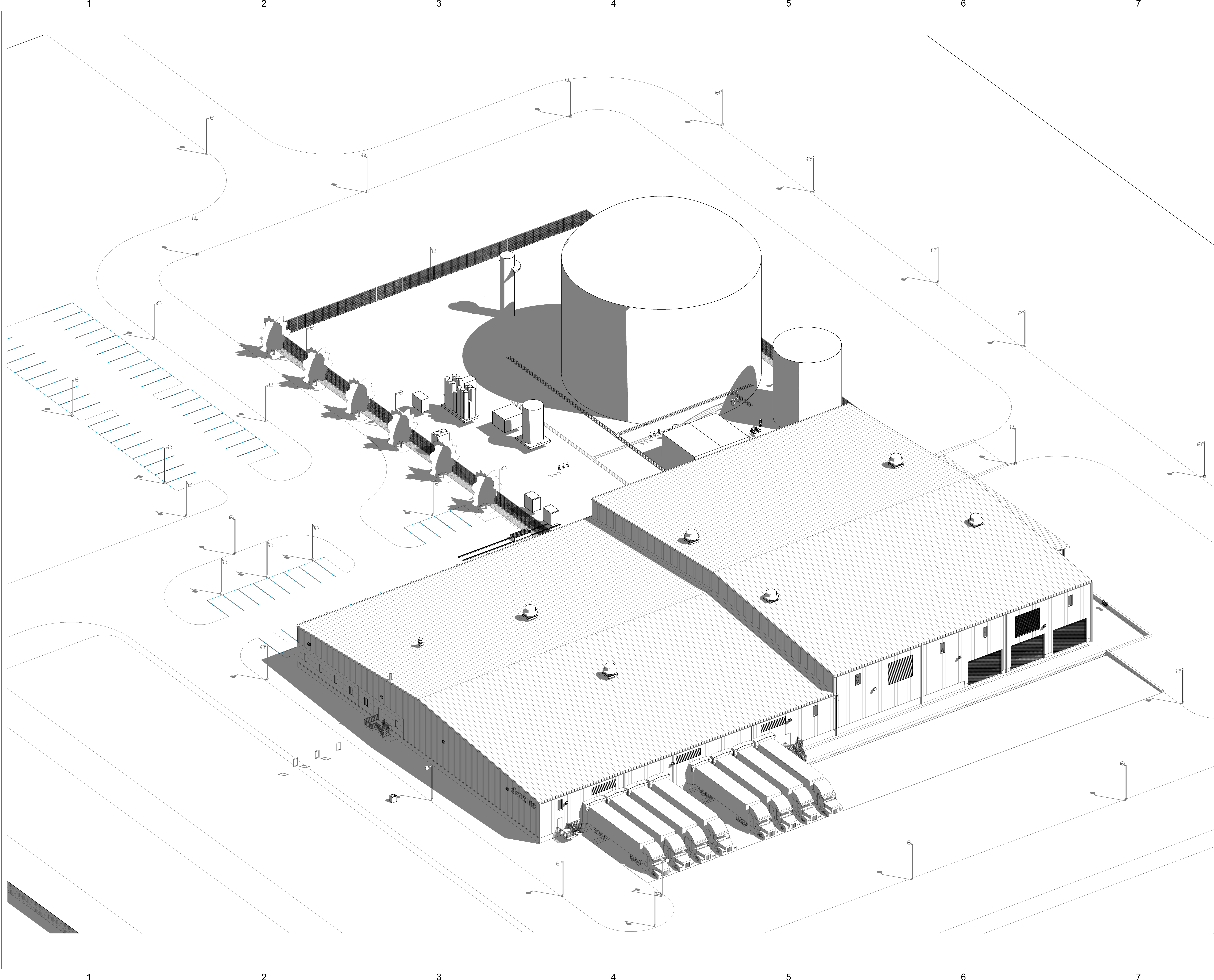
WORK IN PROGRESS
08/05/2022

ARCHITECTURAL
ELEVATIONS

DRAWN BY: WM
CHECKED BY: AZ
SCALE: 1/16" = 1'-0"
PROJECT #: T61350

A-201

A
B
C
D
E
F



A/Z
DESIGN
SERVICES, LLC
Hartford, CT 06103
800.400.2420 | a-zcorp.com

This document is an instrument of professional service, and shall not be used, in whole or in part, for any project other than for which it was created without the express, written consent of A/Z Design Services, LLC or A/Z Corporation. Any unauthorized use, reuse, modification or alteration, including automated conversion of this document shall be at the user's sole risk without liability or legal exposure to A/Z Design Services, LLC or A/Z Corporation.

CONSULTANTS



THE LEADER IN THE STEEL BUILDING INDUSTRY
WWW.SPANCONSTRUCTION.COM
3333 YEAGER DRIVE
MADERA, CA 93637
559.661.1111

WARE MALCOMB

ARCHITECTURE
PLANNING
INTERIORS
CIVIL ENGINEERING
BRANDING
BUILDING MEASUREMENT
4683 CHABOT DRIVE, SUITE 300
PLEASANTON, CA 94588
925.244.9620 | WAREMALCOMB.COM



JENSEN HUGHES
FIRE PROTECTION
117 METRO CENTER BLVD, SUITE 1002
WARWICK, RI 02886
401.214.3160 | JENSENHUGHES.COM



PROJECT

divert

INTEGRATED
FOOD RECOVERY
FACILITY

4407 WEST MAIN STREET
TURLOCK, CA 95380

KEY PLAN

CONFIDENTIAL & PROPRIETARY

This document contains confidential and proprietary information which is the property of the Owner and must be safeguarded accordingly. Do not disclose information contained herein to any outside party. Dispose of this document either by shredding or controlled waste receptacles only. This document may not be disposed of via normal trash. When in use, this document must be under your control and care at all time. When not in use, this document must be properly filed and secured.

REV	DESCRIPTION	DATE
A	PROGRESS REVIEW	03/08/2022
B	30% DESIGN COMPLETE	04/08/2022
C	30% DESIGN REDUCE SCOPE	05/13/2022
D	WORK IN PROGRESS	07/13/2022
E	WORK IN PROGRESS	07/20/2022
F	WORK IN PROGRESS	07/27/2022
G	ISSUED FOR 60% DESIGN	08/05/2022

SEAL

ARCHITECTURAL

3D VIEW

DRAWN BY: WM
CHECKED BY: AZ
SCALE: N.T.S.
PROJECT #: T61350

A-901

WORK IN PROGRESS
08/05/2022